



# BEE FLIGHT

## *President's Report*

The Club meeting scheduled for the 5<sup>th</sup> May has been cancelled due to risks associated with COVID 19. In the present situation the Club will not be meeting until further notice. This will depend on the Government relaxing the present restrictions on the number of people that can attend gatherings. During this period a newsletter will not be sent out each month but as soon as we can recommence having meetings, all members will receive a newsletter seven days prior to the Club holding a meeting again. The date of the meeting will be advised in the newsletter.

Over the past few days I have noticed some cooler weather so just a reminder to please ensure your bees are ready for winter even though it is still early. There is some good information including feeding and tips on overwintering bees on our Club website.

The Club's financial year ends on the 31<sup>st</sup> May and all memberships will be due. If possible you can direct deposit your fees into the Club's bank account. The bank details are included in the newsletter. Each year we spend considerable time chasing members for payment so I respectfully ask that you arrange to pay your dues as soon as you can.

I thank Wayne & Kristy Clark for taking on the responsibility of producing the newsletter for the Club. If members have any articles or information that they would like to be included in the newsletter, they can send them to Wayne & Kristy at [iwmba.editor@gmail.com](mailto:iwmba.editor@gmail.com).

In closing I would like to thank Phil Corbett for the many hours he has spent producing the newsletter for the last eight years.

***Phil Geeves - Club President***

*Our club meetings are held on the first Tuesday of each month (except January) at the W.G. Hayden Humanities Centre Cnr. South and Nicholas Streets, Ipswich 7.30pm.  
Visitors Welcome*

## *This Month*

### HOW I STARTED IN BEES.

A five-minute talk about "How you became a Beekeeper".

**JULY**

**BARBARA, STEPHEN & DANIELLE ANDREWS**

**AUGUST**

**GEOFF BROWNE**

### SUPPER ROSTER

**JULY**

**PETER WALDRON, BEAU RUSH, ALEXANDRA WINTER & LYNETTE ZOCARO**

**AUGUST**

**EUNICE TROTT, LOU & GRACE ULJAREVIC & JON VERMEER.**

**NOTE: IF YOU ARE ON THE SUPPER OR ROOM SET UP ROSTER AND UNABLE TO ATTEND THE MEETING, PLEASE ENSURE YOU ADVISE SECRETARY NOELA SO THAT A SUBSTITUTE MEMBER CAN BE FOUND.**

### ROOM SET UP

**JULY**

**GLEN WOODFORD**

**AUGUST**

**KEN WALL**

## Dates to Remember

**Meeting of the Club will be advised when restrictions are lifted**

## Club Registration

Before club meetings all members are required to pay a \$2.00 registration fee.

Club events and show dates are on our website calendar

[www.honey.org.au](http://www.honey.org.au)



## Newsletter Editor

Hi All!

We hope all is well in these trying times, but we want to take this time to thank Phil Corbett for all his work over the years as Editor for the Club. We also want to thank everyone for entrusting us to take over the position and keep this Newsletter rolling on.

This being our first Newsletter, it will be slightly different, not just because we are getting in the groove for things, but also that during these times there is little going on within, and without the club, so this edition is slightly smaller. But with all that is going on the world, our little bees seem to take very little notice and keep chugging along.

We hope you enjoy this edition for what it is, and please stay safe.

*Wayne & Kristy Clark, Editors*

**PLEASE FORWARD ANY INTERESTING ARTICLES OR PHOTOS TO OUR NEW EDITORS**

**WAYNE & KRISTY CLARK EMAIL: [iwmba.editor@gmail.com](mailto:iwmba.editor@gmail.com)**

## Members' Door Prize

As previously advised, every month our door prize for one lucky member will be a **full hive kit (a bottom board, a lid, brood box, super and a Queen excluder)**.

A fantastic prize especially for new beekeepers trying to build up the hive numbers. Winners will receive a voucher to collect their prize from Quality Bee Keeping Supplies. Remember you can only win it if you are at the meeting and you are a financial member of the Club.

**PLEASE NOTE:** You must be wearing your name badge to be eligible to win.

## Door Prize Winners

**Congratulations to:**

***Alan Brown & Jim Shini***

Winners should Contact Quality Beekeeping Supplies Tel : 3376 5404 to pick up their prize.

Many thanks to Barbara Cush who only uses plastic boxes, re-donated the door prize from February

This is what Wayne and I make with our left over wax to use as gifts for friends and family - Kristy

## Making Beeswax Candles

*It used to be believed that because bees left the Garden of Eden after the Fall, they were blessed by God, and it was therefore essential for candles that were used whenever the Catholic mass was celebrated to be made of beeswax. As beeswax is an expensive commodity, economic necessity now dictates that candles used in religious ceremonies need contain only 25 per cent beeswax.*

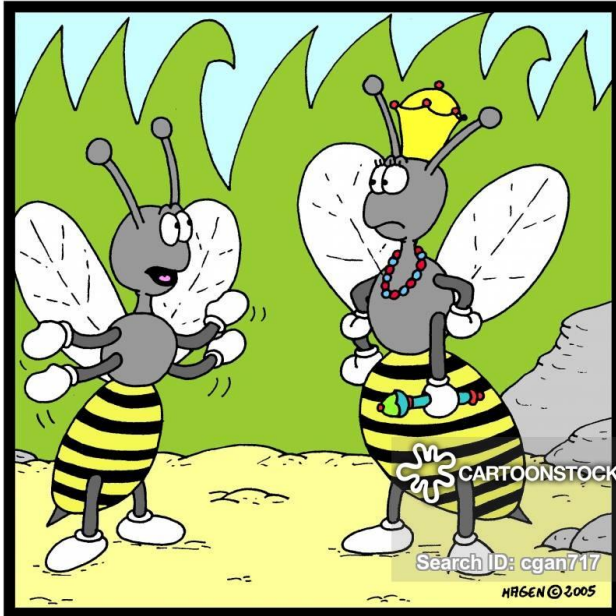
*The candles are traditionally made by the dipping method: melt the wax gently in a tall, narrow container and then dip the wick quickly in and out until it is coated with wax. Pull it straight and repeat the process until the candle is the required thickness. Alternatively, if you have a suitable mould, you can pour the melted wax over the wick, again taking care to ensure the wick is straight. If you want your candles to have a honeycomb texture, you can make them simply and easily by rolling bought beeswax sheets.*



Reference: *In Praise of Honey: Honey for Health, Beauty & Cookery* by Jane Charlton & Jane Newdick



# Beekeeping Funnies!



But, your Majesty, what's the point of being busy bees if this so-called Beekeeper always steals our honey?



A Worker Bee's Home Life



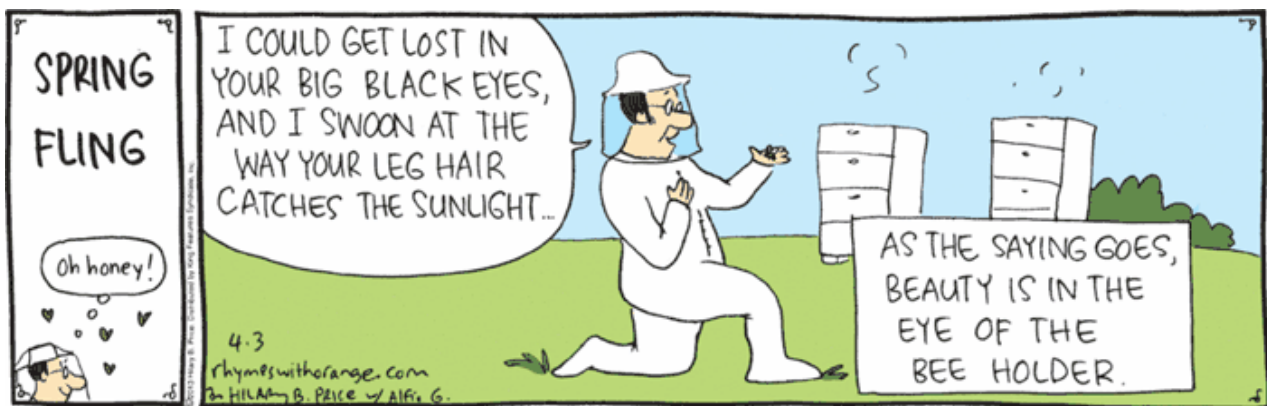
"Ob, but it's fine for you to grade papers?"



"I don't think the new guy gets it."

Viewable Date: July 24, 2010

© Rina Piccolo



## Queensland Beekeepers Association 2020 AGM & State Conference

**When:** Queensland  
Beekeepers Association  
2020 AGM & State  
Conference 11 Jun 2020  
12 Jun 2020

**Where:** Oaks Oasis  
Resort Caloundra,  
Queensland Australia



## For Your Health

### Herbal Cold & Throat Syrup

To relieve all those irritating symptoms that accompany a cold, try this syrup. Sage is said to alleviate aches, pains and fever.

*1/2 tsp chopped fresh or rubbed dried sage*  
*3 tbsp honey*  
*2 tbsp cider vinegar*

Tie the sage in a muslin bag and steep in a cup filled with boiling water for 10 minutes. Remove the sage and allow to cool. Put the honey in a screw top jar or bottle. Pour in the cider vinegar then pour in the cooled sage water. Shake until well mixed. Take 2 teaspoons every hour until the symptoms ease.

### Sleep Enticer

The combination of chamomile, a natural sedative, and honey, believed to induce sleep, should result in a peaceful, uninterrupted slumber. The beverage is best sipped when tucked up in bed, propped up with a good book so that you can drift off to sleep.

*1 chamomile tea infusion bag*  
*2 tsp honey*

Make a cup of chamomile tea with hot water and allow to cool until warm. Stir in the honey and sip intermittently.

## Queensland Agricultural Shows 2020

<u>Marburg</u>	<u>CANCELLED</u>	<u><a href="http://www.marburgshow.com.au">www.marburgshow.com.au</a></u>
<u>Ipswich</u>	<u>CANCELLED</u>	<u><a href="http://www.ipswichshow.com.au">www.ipswichshow.com.au</a></u>
<u>Esk</u>	<u>CANCELLED</u>	<u><a href="http://www.eskshow.com.au">www.eskshow.com.au</a></u>
<u>Boonah</u>	<u>CANCELLED</u>	<u><a href="http://www.boonahshowsociety.org.au">www.boonahshowsociety.org.au</a></u>
<u>Toogoolawah</u>	<u>CANCELLED</u>	<u><a href="http://www.toogoolawahshowsociety.org.au">www.toogoolawahshowsociety.org.au</a></u>
<u>Lowood</u>	<u>CANCELLED</u>	<u><a href="http://www.lowwoodshowsociety.com.au">www.lowwoodshowsociety.com.au</a></u>
<u>Kalbar</u>	<u>CANCELLED</u>	<u><a href="http://www.kalbarshow.net.au">www.kalbarshow.net.au</a></u>
<u>Rosewood</u>	<u>CANCELLED</u>	<u><a href="http://www.rosewoodshow.com">www.rosewoodshow.com</a></u>
<u>Redcliffe</u>	<u>CANCELLED</u>	<u><a href="http://www.redcliffeshow.org.au">www.redcliffeshow.org.au</a></u>
<u>EKKA</u>	<u>CANCELLED</u>	<u><a href="http://www.ekka.com.au">www.ekka.com.au</a></u>

### Flora - MAY

In May we should be seeing: Brown Bloodwood, Broad Leaved Ironbark, Gum Topped Box, Molly Red Box, Mountain Coolibah, Pink Bloodwood, Paper Barked Tea Tree, White Box, Caley's Ironbark and Blackbutt.

### Name Badges

Please wear your badge to all club events and meetings. We currently have over 300 paid up members and it's almost impossible to remember everyone's name. It also shows that you are a member and it helps with introductions. Try not to lose your badge, as we can order replacements but at a cost of \$13 for the member.

### Library

Library books and DVDs are able to be borrowed for one month at a time. If you wish to keep the book, or DVD for another month, bring it back and it can be re-issued to you. Any books or DVDs lost or damaged will need to be paid for by the borrower.

### Club shirts, badges and caps

If any members of the Club are interested in having a club shirt and/or badge, please see Secretary Noela. The price of shirts is \$18.00 and the badge is now only \$4.00.

### Committee Meeting

**CANCELLED** – New date TBA

### Support those who support you

Our club has been very fortunate to benefit from the generosity of Noel Hutchinson of Quality Beekeeping Supplies (3376 5404), and Burnett Beekeeping Supplies (0429 130 167). Please remember these very good friends when you require Apiary supplies.

## Items for purchase or hire are only available to club members

### Nucleus Hives (Members Only)

At the present time the club hives are not strong enough to be split. It is therefore unlikely that NUCs will be available for the foreseeable future. If the hives build up and can be split preference will be given to newer members that do not yet have any bees.

Club Nuc's will be in corflute non-returnable hive boxes each with a marked Queen, bees and 5 frames. Club nucleus hives will be \$120.00. If you require any additional information please contact Phil Geeves' his email is: [pwgeeves@tpg.com.au](mailto:pwgeeves@tpg.com.au) Tel 0409 485 447

### Apithor Beetle Traps (Members only)

The club currently has stock of beetle traps. They will be available at the next meeting at the cost of \$6.00 each. If you need large numbers of these please advise Noela beforehand.

### Honey Buckets, Bottles and Jars (Members only)

If you require a large number of jars (more than 100) we respectfully request that you purchase them from one of our recommended Apiary Suppliers. Should you wish to purchase jars from the club please talk to Noela 07 3281 4165.

- Plastic 1 kg jars are 70c each and are available in 50 or 100 jar cartons.
- New 20 litre honey buckets with lids are \$7.00 each.
- 500g bottles for competitions are available at 90c each.



**The club does not stock or supply items other than the items mentioned.**

### Wax Melter (Members only)

The club now has a wax melter available for hire. Please Contact Peter Anderson if you would like to access this club equipment. Phone: 3800 3562.

### Wiring Board (Members only)

Just a reminder the club has available for loan to members a wiring board, a box to make frames up in and an embedder to put the wax on the frames. Our thanks to Noel Scholz for these items.

### Extracting Van Hire (Members only)

Should any member wish to hire the club van please contact Peter Anderson on 3800 3562 to make a booking. The cost of using the van is \$20.00 per day

### Club Hand Extractor (Members only)

The club has two hand extractors for hire by members who only have a small number of frames to extract. To hire one of the extractors members should book and pay at the Club meeting prior to picking it up. The cost is \$10.00 per day for a max of 7 days. The extractor must be returned clean. An electric uncapping knife will go out with each extractor. Peter Anderson at Forestdale has one of them. Phone: 3800 3562. Phil Geeves at Blackstone has the other one. Phone: 0409 485 447



## Join or Renew Your Membership



### Membership Fees for the 2020 - 21 year can be paid now.

Please see **Bec Hendry** at the next meeting to pay your annual fees.

Membership is \$25.00 for single and \$30.00 for a family membership.

If you wish to pay by direct deposit, please deposit the fee into the Club's bank account.

Bank of Qld

BSB: 124053

Account No: 10278864

Please put your surname in the reference area.

I&WMBA COMMITTEE 2019-2020			
Patron	Norm Hinton		
President	Phil Geeves	0409 485 447	pwgeeves@tpg.com.au
Vice President	George Pallot	07 3202 8332	riverbee@bigpond.net.au
Secretary	Noela Geeves	07 3281 4165	beelady61@hotmail.com
Assistant Secretary	Mike Trott	07 5464 1949	sentosabee@gmail.com
Committee	Phil Dunlop	07 5465 1919	phildunlop59@outlook.com
Treasurer	Bec Hendry	0408 878 103	bec@hendryfamily.net
Committee	Grahame Yates	07 3288 8238	NONE
Committee	Shane O'Reilly	07 5464 6138	lessshane@skymesh.com.au
Committee	Phil Corbett	0419 196 330	dragun@abclass.com.au
Newsletter & Website	Wayne & Kristy Clark	0400 401 675	iwmba.editor@gmail.com

#### Disclaimer

The Content of our newsletter is general in nature. It is made available on the understanding that the I&WMBA is not thereby engaged in rendering professional advice. Links to other websites are inserted for convenience and do not constitute endorsement of material at those sites, or any associated organisation, product or service. In no event will we be liable for any loss or damage including without limitation, indirect or consequential loss or damage, or any loss or damage whatsoever arising from loss of data or profits arising out of, or in connection with this newsletter.