

## Dates to Remember

**Next Club meeting 7<sup>th</sup> May**  
 Committee Meeting -13<sup>th</sup> May  
 Ipswich Show Setup - 16<sup>th</sup> May  
 Ipswich Show 17<sup>th</sup> to 19<sup>th</sup> May  
 Ipswich Show Clean Up 20<sup>th</sup> May  
 QBA Conference 30<sup>th</sup> & 31<sup>st</sup> May

## Club Registration

Before club meetings all members are required to pay a \$2.00 registration fee.

Club events and show dates are on our website calendar

[www.honey.org.au](http://www.honey.org.au)

# BEE FLIGHT

## Presidents Report

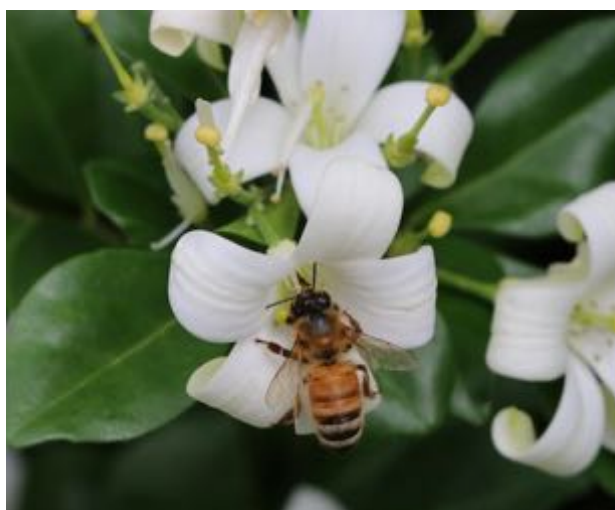


Welcome to our May Newsletter. The Ipswich Show is fast approaching and I ask all members to consider giving a few hours to assist with the Club's activities. This is our most significant fundraising event for the year. The proceeds from the sale of honey and other products helps maintain the club's good financial position in order to pay for our larger financial commitments such as insurance. We hope that you will spare a couple of hours to come & help setting up on Thursday night, manning the stall on Friday, Saturday, Sunday and again packing up on Monday morning.

Over the past few days I have noticed some cooler weather so just a reminder to please ensure your bees are ready for winter. If you missed the presentation at our last meeting there is information and tips on overwintering bees on our club website.

Club Memberships are now becoming due, please pay our Treasurer at the next meeting or you can direct deposit your fees into the Club's bank account. Each year we spend considerable time chasing members for payment so I respectfully ask that you arrange to pay your dues as soon as you can.

*See you all at the May meeting.*



Mary Corbett - Bee on Mock Orange

**OUR CLUB MEETINGS ARE HELD ON THE FIRST  
TUESDAY OF EACH MONTH  
(EXCEPT JANUARY)**

**AT THE W.G. HAYDEN HUMANITIES CENTRE  
CNR. SOUTH AND NICHOLAS STREETS, IPSWICH  
7.30PM.  
VISITORS WELCOME**



This year we're running a PHOTO competition for "Bee Pictures." Each month any members can send me pictures they have taken and I will post the best of them in our newsletter and on facebook. At the end of the

year the Committee will pick the top 3 pictures and award 3 prizes. The only rules are the picture *must* have a bee in it, you must take it, and you need to be a financial member of our Club at the time of judging.

Just email or text them to me. First prize will be \$100, second \$50 and third \$25.

*Cheers Phil Corbett Editor*

Text 0419 196 330 Email: [Dragun@abclass.com.au](mailto:Dragun@abclass.com.au)

## Show Entries

The first show for 2018 will be Marburg on the 10<sup>th</sup> & 11<sup>th</sup> May. Members who want entries to be taken on their behalf need to get them to Phil Geeves on Thursday 9<sup>th</sup> May before 12 noon. Remember to have your completed entry forms. If you prefer you can lodge your own entries at the show. Entries will be accepted on Thursday night the 9<sup>th</sup> May at 7.30pm at the Steinhardt Pavilion. Entry forms and schedule can be found at [www.marburgshow.com.au](http://www.marburgshow.com.au)

Entries for Ipswich Show will be accepted at the show-grounds on Wednesday 15<sup>th</sup> May from 7.30pm to 9.30pm and Thursday 16<sup>th</sup> May from 7.30am to 9am. Entry forms can be secured from the show website. [www.ipswichshow.com.au](http://www.ipswichshow.com.au).

## Treasurer

At the last committee meeting on the 8<sup>th</sup> April, Bec Hendry was appointed as interim Treasurer. Bec will take on the role until the August meeting when our committee is elected at the AGM. We would like to thank Peter Anderson for helping us out in the short term.

## Registration Fee

As most of you would know, a vote regarding the current registration fee for meetings was taken at the April General Meeting. This was done following comments from some members regarding the current financial position of the Club. Members present voted unanimously to retain the current \$2.00 fee. Accordingly it will remain as is.

## This Month

### HOW I STARTED IN BEES.

A FIVE-MINUTE TALK ABOUT "HOW YOU BECAME A BEEKEEPER".

MAY - NOEL BOWERS  
JUNE - ROBERT BUMSTEAD

### SUPPER ROSTER

#### MAY

ZOE WALLACE, TRISH GRACE,  
DON HORTON  
& BENITA IRONSIDE

#### JUNE

GEOFF JAMES, GLORIA &  
NAOMI JONES AND RANDALL  
KIRKWOOD

NOTE: IF YOU ARE ON THE SUPPER OR ROOM SET UP ROSTER AND UNABLE TO ATTEND THE MEETING, PLEASE ENSURE YOU ADVISE SECRETARY NOELA SO THAT A SUBSTITUTE MEMBER CAN BE FOUND.



### ROOM SET UP

#### MAY

GRAHAME & MATTHEW  
YATES

#### JUNE

KEN BANNISTER

## May Meeting

May Guest Speakers will be James Kenny & James Watts, presenting an interesting opportunity to increase apiary income by extracting bee venom

Members' Door Prize will be a Hive Super (Kit for assembly)

## Ipswich Show

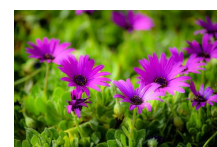
**Getting ready for the Ipswich Show, all hands on deck please.**

The Ipswich Show is on this year from the 17<sup>th</sup> to the 19<sup>th</sup> May. The show is an important showcase for our club. As our local show we are again taking a stall to promote our club and honey. This show is the main fund raising activity for our club and goes to help pay for the club insurance and general running costs. The show involves a great deal of work and our stall needs to be staffed throughout the event.

A roster for the 3 days plus set up and takedown will be organised at the May meeting. Club members are asked to volunteer a little of their time to support the club at this event

## Flora - May

In May we should be seeing: Brown Bloodwood, Broad Leaved Ironbark, Gum Topped Box, Molly Red Box, Mountain Coolibah, Pink Bloodwood, Paper Barked Tea Tree, White Box, Caley's Ironbark and Blackbutt.



## 2019 QBA State Conference - Bribie Island May 30, 31st 2019

**Thursday 30<sup>th</sup> to Friday the 31<sup>st</sup> of May 2019** at the Bribie Island Golf Club.

The QBA conference dinner will be held on the Friday evening to officially close the 2019 Annual Conference.

A field day full of trade exhibits will take place on Saturday the **1<sup>st</sup> of June** at the Bribie Island State School.

As the conference is taking place on the island, I imagine many members will take up the option to stay and play for a few days either side of the conference.

For more information about the conference visit: <http://qbabees.org.au/events/coming-events/>

Please see the link below for accommodation options on the Island:

<http://visitbribieisland.com.au/bribie-island/accommodation/>

## Membership

**Membership Fees for the 2019 - 20 year can be paid now.**

**Please see the treasurer at the meeting to pay your annual fees.**

**Membership is \$25.00 for single and \$30.00 for a family membership.**

**If you wish to pay by direct debit please contact Noela for our bank account details.**

**Noela's number is 07 3281 4165**

Join or Renew Your Membership



## Show Dates 2019

Marburg	10th & 11th May 2019	<a href="http://www.marburgshowsociety.com.au">www.marburgshowsociety.com.au</a>
Ipswich	17th to 19th May 2019	<a href="http://www.ipswichshow.com.au">www.ipswichshow.com.au</a>
Esk	24th & 25th May 2019	<a href="http://www.eskshow.com.au">www.eskshow.com.au</a>
Boonah	31st May & 1st June 2019	<a href="http://www.boonahshowsociety.org.au">www.boonahshowsociety.org.au</a>
Toogoolawah	7th & 8th June 2019	<a href="http://www.toogoolawahshowsociety.org.au">www.toogoolawahshowsociety.org.au</a>
Lowood	14th & 15th June 2019	<a href="http://www.lowoodshowsociety.com.au">www.lowoodshowsociety.com.au</a>
Kalbar	21st & 22nd June 2019	<a href="http://www.kalbarshow.net.au">www.kalbarshow.net.au</a>
Rosewood	28th & 29th June 2018	<a href="http://www.rosewoodshow.com">www.rosewoodshow.com</a>
Redcliffe	28th to 30th June 2019	<a href="http://www.redcliffeshow.org.au">www.redcliffeshow.org.au</a>
EKKA	9th - 18th August 2019	<a href="http://www.ekka.com.au">www.ekka.com.au</a>

## Name Badges

Please wear your badge to all club events and meetings. We currently have over 300 paid up members and it's almost impossible to remember everyone's name. It also shows that you are a member and it helps with introductions. We would ask that you try not to lose your badge. We can order replacements but the cost of \$13 will need to be paid by the member for any replacements.

## Club shirts, badges and caps

If any members of the Club are interested in having a club shirt and/or badge, please see Secretary Noela. The price of shirts is \$18.00 and the badge is now only \$4.00.

## Library

Library books and DVDs are able to be borrowed for one month at a time. If you wish to keep the book, or DVD for another month, bring it back and it can be re-issued to you. Any books or DVDs lost or damaged will need to be paid for by the borrower.

## Committee Meeting

The next committee meeting will be held on the 13<sup>th</sup> May

## Support those who support you

Our club has been very fortunate to benefit from the generosity of Noel Hutchinson of Quality Beekeeping Supplies (3376 5404), Rod Palmer at C.B. Palmer and Co (0417 796 257) and Burnett Beekeeping Supplies (0429 130 167). Please remember these very good friends when you require Apiary supplies.

## Beeswax Wanted

Both Rod Palmer at CB Palmer & Co, and Noel at Quality Beekeeping Supplies are interested in buying beeswax, any quantity, small or large.

Phone Rod on 0417 796 257

Contact Noel at Quality Beekeeping Supplies on 3376 5404.

## Items for Purchase by Members

### Apithor Beetle Traps (Members only)

The club currently has stock of beetle traps. They will be available at the next meeting at the cost of \$6.00 each. If you need large numbers of these please advise Noela beforehand.

### Honey Buckets, Bottles and Jars (Members only)



If you require a large number of jars (more than 100) we respectfully request that you purchase them from one of our recommended Apiary Suppliers. Should you wish to purchase jars from the club please talk to Noela 07 3281 4165.

- Plastic 1 kg jars are 70c each and are available in 50 or 100 jar cartons.
- New 20 litre honey buckets with lids are \$7.00 each.
- 500g bottles for competitions are available at 90c each.

**The club does not stock or supply items other than the items mentioned.**

## Items for Hire by Members

### Wax Melter (members only)

The club now has a wax melter available for hire. Please Contact Peter Anderson if you would like to access this club equipment. Phone: 3800 3562.

### Wiring Board (Members only)

Just a reminder the club has available for loan to members a wiring board, a box to make frames up in and an embedder to put the wax on the frames. Our thanks to Noel Scholz for these items.

### Extracting Van Hire (Members only)

Should any member wish to hire the club van please contact Peter Anderson on 3800 3562 to make a booking. The cost of using the van is \$20.00 per day

### Club Hand Extractor (Members only)

The club has two hand extractors for hire by members who only have a small number of frames to extract. To hire one of the extractors members should book and pay at the Club meeting prior to picking it up. The cost is \$10.00 per day for a max of 7 days. The extractor must be returned clean. An electric uncapping knife will go out with each extractor.

Depending upon your location

Peter Anderson at Forestdale has one of them. Phone: 3800 3562

Phil Geeves at Blackstone has the other one. Phone: 0409 485 447



## Articles

### COUNTRY WOMEN'S ASSOCIATION STUDYING HONEY

Each year the Qld Country Women's Association (CWA) chooses one agri-product to study. This year, 2019, the subject chosen is "honey". Their interest lies not just in honey but in all that relates to bees, beekeeping, pollination, beeswax, medicinal, etc. There have been requests from some Qld CWA Branches for a beekeeper to give a talk at one of their meetings. However, most do not have contact details for a beekeeper. If you are able and willing to consider giving a talk please contact your local CWA.

### HOW TO MAKE CONTACT WITH THE CWA GROUPS NEAR YOU?

Go to the Qld CWA's web site <http://www.qcwa.org.au/> then to "Find your nearest Branch".

Enter your town or postcode and the nearest CWA Branch will be shown along with many Branches within several kilometres.

### CHALK-BROOD FUNGAL DISEASE ON THE RISE IN AUSTRALIAN BEEHIVES – AND POOR NUTRITION COULD BE TO BLAME

Beehives around Australia are succumbing to the deadly chalk-brood disease at a faster rate than their overseas counterparts, despite having better hygiene practices.

La Trobe University doctoral student and fourth-generation beekeeper Jody Gerdt has researched why Australian honeybees are so susceptible to the disease.

Chalk-brood disease is a fast-acting, spore-forming fungus which, after being ingested by bee larvae, takes just days to puncture the larvae skin and form a fungal mycelia on the outside of the baby bee.

"It affects the developing stage of the bee, so although it doesn't kill the whole hive, it can affect the number of bees that can go out and forage, bring home honey and help out with pollination," Ms Gerdt said.

The spores that infect the bee larvae are so small that they can travel on a single bee hair.

"It can form new spores and then become more contagious in the hive," she said.

With the help of beekeepers from all over the eastern states of Australia, Ms Gerdt looked at the impact of hygiene, bee genetics and environment on the prevalence of chalk-brood, and has found there is a relationship between poor quality pollen and its prevalence in Australian honeybee hives.

North-east Victorian commercial beekeeper David Briggs breeds queen bees and runs between 400–500 hives.

He said nutrition was especially important for generalist foragers, such as honeybees. "Like all livestock, if you've got the nutrition right, then you tend to take care of a lot of other pests and diseases. Bees are no different and, in fact, they are highly sensitive to that," Mr Briggs said.

"Nutritionally, they need to be able to forage across a wide range of plants."



**PHOTO:** As well as being a PhD student, Jody Gerdt is a fourth-generation beekeeper. (ABC Central Victoria: Larissa Romensky)

#### Key points:

- Chalk-brood is fast acting, spore-forming fungus which affects developing baby bees, so small that they can travel on a single bee hair
- Ms Gerdt's research found some bees are more innately resistant to some strains of chalk-brood than others
- Hygienically clean hives have been found to not necessarily mean a hive free of chalk-brood.



### SOME POLLEN BETTER THAN OTHERS

Like humans, bees need a full, balanced diet to achieve optimal health, but Ms Gerdtz said poor quality pollen lets down the foraging honeybees.

Access to forests was needed at different times of the year to ensure bees had a quality diet.

"It's shown that eucalypts, different species, some of the pollen isn't very good for [bees], it doesn't have the full amino acid profile that bees need," Ms Gerdtz said.

"Bees that have a good nutritional background in mainly proteins, pollens, amino acids, have a more robust immune system."

Ms Gerdtz said chalk-brood disease, caused by the fungal pathogen *Ascosphaera apis*, was a big threat to the economic viability of Australia's commercial beekeeping industry.

"A hive that's chronically infected reduces production by between 20 and 50 per cent," she said.

"That's not 20 to 50 per cent less that the beekeeper is bringing home, that is the difference between bringing home something and bringing home nothing.

Source and full article:

<https://www.abc.net.au/news/2019-03-28/chalkbrood-fungal-disease-on-the-rise-in-australian-beehives/10945502>

### BEES TOO HOT

THE hot and dry conditions during the past summer have caused bee colony numbers to take a dive, creating potential headaches for those requiring pollination services later in the year.

Half Barrel Honey beekeeper Kerry Chambers, Renmark West, said the demand for pollination was growing on the back of an increased number of almond trees being planted in the Riverland.



"Some growers have deliberately pulled out vines to replace with almond trees, and more almond trees means there is a greater demand for bees," she said. She said it would be a struggle to meet the overall demand in her area, and potentially across the state. "Even amateur beekeepers like myself are having to lease out our hives to fill the shortfall of commercial beekeepers during this tough season," she said.

The hive health deterioration during the summer has presented apiarists with a steep challenge to restore numbers in time for winter, when populations naturally dwindle.

"If beekeepers across the board aren't able to increase their number of colonies leading into winter this will definitely affect the number of bees available for almond pollination later in the year," she said.

"I haven't been able to split any of my hives to create new colonies because the existing colonies are just not strong enough."

Ms Chambers said most of her bees, which are placed in standalone hives in the backyards of host gardens, had only barely found enough nectar to survive, and were unable to create any surplus honey available for harvest. The lack of colony strength in the face of heatwaves was largely due to nectar shortages, caused by reduced flowering in the absence of rain. In addition, extreme heat led to wilting of flowers that did manage to grow.

**SA Apiarists' Association** president and Tintinara beekeeper Ben Hooper said the effect of flower wilting of crops such as lucerne had been detrimental for nectar availability. "The wilting effectively lent itself to a shorter flowering period, and the heat took the end out of it for us," he said. "Lucerne is a major crop for us and, yes, we are there to pollinate, but it is also a really good, reliable source of nectar for making honey." In addition to the shortages, the hot conditions meant that bees switched from nectar foraging to water collection, slowing breeding within the hive and causing numbers to plateau or reduce. "The bees run an evaporative cooling system to keep hive temperature between 32 degrees Celsius and 35C, and when the temperature rises above this bees start to change roles, with more going out to collect water as opposed to nectar," he said. "Our game at the moment is making sure our bees are still breeding at least enough to build numbers to make it through winter."

Source: <https://www.goodfruitandvegetables.com.au/story/5974938/sa-bees-hurt-by-hot-weather/>



PLEASE FORWARD ANY INTERESTING ARTICLES OR PHOTOS TO ME AT

THANK YOU PHIL CORBETT  
BEE FLIGHT EDITOR AND WEBSITE MANAGER

#### I&WMBA COMMITTEE 2018- 2019

Patron	Norm Hinton		
President	Phil Geeves	0409 485 447	<a href="mailto:pwgeeves@tpg.com.au">pwgeeves@tpg.com.au</a>
Vice President	George Pallot	07 3202 8332	<a href="mailto:riverbee@bigpond.net.au">riverbee@bigpond.net.au</a>
Secretary	Noela Geeves	07 3281 4165	<a href="mailto:beelady61@hotmail.com">beelady61@hotmail.com</a>
Assistant Secretary	Mike Trott	07 5464 1949	<a href="mailto:sentosabee@gmail.com">sentosabee@gmail.com</a>
Committee	Phil Dunlop	07 5465 1919	<a href="mailto:phildunlop59@outlook.com">phildunlop59@outlook.com</a>
Treasurer (Interim)	Bec Hendry	0408 878 103	<a href="mailto:bec@hendryfamily.net">bec@hendryfamily.net</a>
Committee	Grahame Yates	07 3288 8238	NONE
Committee	Shane O'Reilly	07 5464 6138	<a href="mailto:lessshane@skymesh.com.au">lessshane@skymesh.com.au</a>
Newsletter & website	Phil Corbett	0419 196 330	<a href="mailto:dragun@abclass.com.au">dragun@abclass.com.au</a>

#### Disclaimer

The Content of our newsletter is general in nature. It is made available on the understanding that the I&WMBA is not thereby engaged in rendering professional advice. Links to other websites are inserted for convenience and do not constitute endorsement of material at those sites, or any associated organisation, product or service. In no event will we be liable for any loss or damage including without limitation, indirect or consequential loss or damage, or any loss or damage whatsoever arising from loss of data or profits arising out of, or in connection with this newsletter.