

Bee Flight

Ipswich & West Moreton Beekeepers Association



President's Report

Welcome to our April newsletter. March was a difficult month for working bees with a lot of days being very wet followed by strong winds. The forecast for April is better and with cooler days we should be able to catch up on work in the apiary.



We had our annual club honey competition at our March meeting, well done to all those who entered this year. Great practice for the upcoming show season. The results for the competition are in this newsletter.

We also held our field day at Peak Crossing on the 11th March. We had a great day with fantastic speakers and a good turn out of suppliers. The weather was cooler making the hall a lot more comfortable. I would like to thank those that came and particularly those who helped set up and pack away - the stalwarts of the attendance that support the club continually. Our overall attendance however was about half of what attended last year. The committee was disappointed with the low number of members that attended. We have over 250 individual members and yet only around 50 were in attendance. Once again I would encourage all members particularly the newer members to let us know what we can do to encourage your attendance and to get involved. Our field-day is intended to showcase our club and encourage interest in bees from the community. This can only happen with the support of our members. I look forward to receiving any ideas you may have.

Phil Geeves
Club President

April 2018 Edition

Club Meetings

Our club meetings are held on the first Tuesday of each month (except January)

Venue

W.G. Hayden Humanities Centre
Cnr. South and Nicholas Streets,
Ipswich 7.30pm.

All welcome.

Club Registration

Before club meetings all members are required to pay a \$2.00 registration fee.

Dates to Remember

Club Meeting - 3rd April
Committee Meeting 9th April
Set up for Ipswich Show 17th May
Ipswich Show. 18th to 20th May
"Come along and help".
Pack up Ipswich Show 21st May
Bee Congress 2018
27th to 30th June

Club events are on the website calendar
<http://www.honey.org.au>

Questions ?

Don't forget you can submit written questions on beekeeping at each club meeting.



Just pop them in the container near the entrance on your way in.

Noela Geeves
Club Secretary

This Month

- Congratulations to Trevor Weatherhead AM. Trevor Weatherhead has been appointed as a Member in the General Division of the Order of Australia. Trevor is an ardent supporter of our club and we congratulate him on this well deserved award.
- Getting ready for the Ipswich Show, all hands on deck please.
- Denis Manning - Telling his story of how he started in bees.
- Phil Corbett - Presentation on "Over Wintering Bees".
- This months' lucky door prize will be a \$25 voucher from Quality Beekeeping Supplies. *Thank you Noel.*



Vote of Thanks

A very big **THANK YOU** to everyone that supported the field day this year. In particular our guest speakers Graham Beech, Trevor Weatherhead Bob Luttrell and my wife Mary Corbett who undertook the cooking demonstration. Thanks also to Jon Krause for opening our event. Well done George Pallot for MCing the day. We would also like to thank Peter & Rhonda Warhurst for judging our competitions and James Linklater- Steele for continuing to support the club with the donation of some excellent raffle prizes. Many thanks to the trade suppliers stall holders and the club members who attended and helped set up and clear away - without you the day would not be possible. One last thank you to Peak Crossing School for the hire of the venue and use of the equipment.



3rd Australian Bee Congress



Registrations for the 3rd Australian Bee Congress to be held at Royal Pines on the Gold Coast, from 27th - 30th June 2018 are now open.

Details on the Congress can be found on the congress website, simply follow the link below. The full programme is now available. Come and join with beekeepers and scientists from Australia and overseas for a great learning experience.

Please note: Early-bird rates are available until the 6th April www.australianbeecongress.com.au

Honey Show

Also in conjunction with the Congress is a Honey Show. Details are also on the website. We encourage you to put together some entries so that we have a good display. A honey show always attracts the media so we need to have a good array of entries. Please note that entries are restricted to Congress delegates only.

Ipswich Show



The Ipswich Show is on this year from the 18th to the 20th May. The show is an important showcase for our club. As our local show we are again taking a stall to promote our club and honey. This show is the main fund raising activity for our club and goes to help pay for the club insurance and general running costs. The show involves a great deal of work and our stall needs to be staffed throughout the event. A roster for the 3 days will be organised at the April meeting. Club members are asked to volunteer a little of their time to support the club at this event

Join or Renew Your Membership



Membership Fees for the 2018 - 19 year can be paid now.

Please see Treasurer Kellie Round at the meeting to pay your annual fees.

Membership is \$25.00 for single and \$30.00 for a family membership.

If you wish to pay by direct debit please contact Kellie for our bank account details.

Kellie's number is 0407 114 513.

Name Badges

**New name badges for all our financial members are available for collection at our meetings.
If you haven't collected yours yet please do so at the next meeting.**

Please wear your badge to all club events and meetings. We currently have 250 paid up members and it's almost impossible to remember everyone's name, it also shows that you are a member and it helps with introductions. We would ask that you try not to lose your badge. We can order replacements but the cost of \$13 will need to be paid by the member for any replacements.

Show Dates 2017

<u>Marburg</u>	<u>11th & 12th May 2018</u>	<u>www.marburgshowsociety.com.au</u>
<u>Ipswich</u>	<u>18th - 20th May 2018</u>	<u>www.ipswichshow.com.au</u>
<u>Boonah</u>	<u>1st & 2nd June 2018</u>	<u>www.boonahshowsociety.org.au</u>
<u>Lowood</u>	<u>15th & 16th June 2018</u>	<u>www.lowoodshowsociety.com.au</u>
<u>Kalbar</u>	<u>22nd & 23rd June 2018</u>	<u>www.kalbarshow.net.au</u>
<u>Rosewood</u>	<u>29th & 30th June 2018</u>	<u>www.rosewoodshow.com</u>
<u>Redcliffe</u>	<u>29th June to 1st July 2018</u>	<u>www.redcliffeshow.org.au</u>
<u>EKKA</u>	<u>10th - 19th August 2018</u>	<u>www.ekka.com.au</u>
<u>Beaudesert</u>	<u>7th & 8th September 2018</u>	<u>www.beaudesertshow.org.au</u>

Club Honey Competition Results

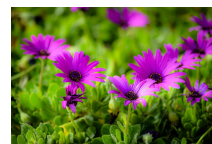
Club Honey Competition Results from the Club Meeting 6 th March 2016			
	First	Second	Third
Light Honey	Darrel Frank	Frank Earley	Ken Freiberg
Golden Honey	Clint Jones	Rebecca Hendry	Ken Freiberg
Dark Honey	Ken Freiberg	Geraldene Fitzpatrick	Darrel Frank
Beeswax block	Peter Meehan	N/A	N/A
Creamed Honey	Ken Freiberg	Frank Earley	N/A
Many thanks to our Judge Trevor Weatherhead & our Steward Phil Dunlop			

Field Day Competition Results

Results for Ipswich Club Members in the Field Day honey competition <i>Thanks to Peter & Ronda Warhurst for Judging Phil Geeves and Phil Dunlop for Stewarding the results</i>			
	First	Second	Third
Light Honey	Ken Freiberg	Beau Rush	
Golden Honey	Noela Geeves	Phil Geeves	
Dark Honey	Ken Freiberg	Phil Geeves	
Comb Section in Honey	Noela Geeves	Ken Freiberg	Phil Geeves
Creamed Honey	Ken Freiberg	Phil Geeves	Noela Geeves
Beeswax - Yellow	Mary Corbett	Beau Rush	
Beeswax - White	Mary Corbett	Beau Rush	Peter Waldron
Biscuits		Sophia Markotsis	
Cake	Sophia Markotsis		Alex Winter
We managed to hold onto the Inter-club Trophy			

Flora - April

In April we should be seeing Broad-Leaved Ironbark, Brown Bloodwood, Gum Topped Box, Molly Red Box, Mountain Coolibah, Paper, Barked Tea Tree, Pumpkin, White Box, Caley's Ironbark, Blackbutt.



Library

Library books and DVDs are able to be borrowed for one month at a time. If you wish to keep the book, or DVD for another month, bring it back and it can be re-issued to you. Any books or DVDs lost or damaged will need to be paid for by the borrower.

Honey Buckets, Bottles and Jars (Members only)

If you require a large number of jars (more than 100) we respectfully request that you purchase them from one of our recommended Apiary Suppliers. Should you wish to purchase jars from the club please talk to Noela 07 3281 4165.

- Plastic 1 kg jars are 70c each and are available in 50 or 100 jar cartons.
- New 20 litre honey buckets with lids are \$7.00 each.
- 500g bottles for competitions are available at 90c each.



Please keep the boxes that the 1 kg bottles come in and return them for reuse. The club does not stock or supply items other than the items mentioned.

Apithor Beetle Traps (Members only)

The club currently has stock of beetle traps. They will be available at the next meeting at the cost of \$6.00 each. If you need large numbers of these please advise Noela beforehand.

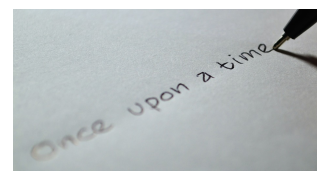
April Meeting

Phil Corbett our Bee Flight Editor and website manager will give a presentation on **“Over Wintering Bees in Queensland”**. This months' lucky door prize will a \$25.00 voucher from Noel Hutchinson of Quality Beekeeping Supplies.

How I started in Bees.

A five-minute talk about “How I became a Beekeeper”.

- April - Denis Manning
- May - Jim Muller



Committee Meeting

The next committee meeting will be held on the 9th April.



Supper Roster

- April - Adrienne Pryor, Peter Hare, Colin & Susan Newham
- May - Suzie Nicholas, Warren Hudson, Greg O'Rourke and Malcolm Reid.

Please Note: If you are on the supper or room set up roster and unable to attend the meeting, please ensure you advise Secretary Noela so that a substitute member can be found.



Room Set up

- April - Terry McAllister
- May - Shane O'Reilly

Facebook

Our club's official Facebook page is at: www.facebook.com/groups/1430687710358660/
You can also follow the links from our website.

Club shirts, badges and caps

If any members of the club are interested in having a club shirt and/or badge, please see Secretary Noela. The price of shirts is \$18.00 and the badge is now only \$4.00.

Beeswax Wanted

Both Rod Palmer at CB Palmer & Co, and Noel at Quality Beekeeping Supplies are interested in buying beeswax, any quantity, small or large. Phone Rod on 0417 796 257
Contact Noel at Quality Beekeeping Supplies on 3376 5404.



Support those who support you.

Our club has been very fortunate to benefit from the generosity of both Noel Hutchinson of Quality Beekeeping Supplies (3376 5404) and Rod Palmer at C.B. Palmer and Co (0417 796 257). Please remember these very good friends when you require Apiary supplies. Many thanks also to Councillor Kylie Stoneman for continuing support in photocopying our newsletter.

Wiring Board (Members only)

Just a reminder the club has available for loan to members a wiring board, a box to make frames up in and an embedder to put the wax on the frames. Our continued thanks to Noel Scholz for these items.

Extracting Van Hire (Members only)

Should any member wish to hire the club van please contact Peter Anderson on 3800 3562 to make a booking. The cost of using the van is \$20.00 per day

Club Hand Extractor (Members only)

The club has two hand extractors for hire by members who only have a small number of frames to extract. To hire one of the extractors members should book and pay at the Club meeting prior to picking it up. The cost is \$10.00 per day for a max of 7 days. The extractor must be returned clean. An electric uncapping knife will go out with each extractor.

Depending upon your location

Peter Anderson at Forestdale has one of them. Phone: 3800 3562

Phil Geeves at Blackstone has the other one. Phone: 0409 485 447

Wax Melter (members only)

The club now has a wax melter available for hire. Please Contact Peter Anderson if you would like to access this club equipment. Phone: 3800 3562.

Articles

White, brown, raw, honey: which type of sugar is best?

In nutrition, sugar refers to simple carbohydrates consisting of one or two basic carbohydrate units such as glucose, fructose and galactose. Consumers often use "sugar" to describe simple carbohydrates that taste sweet, but not all sugars are sweet.

There are many different types of sugars we add to our baking or hot drinks such as white sugar, brown sugar, raw sugar and honey. But when we're looking at a packaged product the ingredients list will have many more options still. Corn syrup, palm sugar, molasses, maple syrup and agave nectar are but a few.

Despite the large variety of sugars, they are very similar nutritionally. They are comprised predominantly of glucose, fructose and sucrose, which are the basic forms of sugar. Glucose and fructose are slightly different in chemical structure, while sucrose is a sugar composed of one glucose and one fructose.

The factors that distinguish sugars are their sources (from sugarcane, beet, fruit, nectar, palm or coconut saps), flavour profiles, and the levels of processing.

Types of sugar

White sugar, also called table sugar, is the final product of the processing and refining of sugarcane or beet. During the refining process, moisture, minerals and compounds that give sugars their colour are removed, and white refined sugar is formed. The byproduct containing the removed compounds during sugar refining is known as "molasses".

Raw sugar is formed if the final refining process is bypassed.

Brown sugar is refined white sugar with varying amounts of molasses added. Raw sugar, brown sugar and molasses are higher in compounds that provide colour, from natural sources or byproducts of the breakdown of sugar (caramel) during sugar processing.

Honey is sugar-rich nectar collected by bees from a wide variety of flowers. Fructose is the main sugar found in honey, followed by glucose and sucrose. The sweet taste of honey is attributed to its higher fructose content, and fructose is known to be sweeter than glucose or sucrose. Honey is



about 17 per cent water. Honey contains a sweeter type of sugar, meaning you don't have to use as much. It also contains more water than table sugar.

Which type is best?

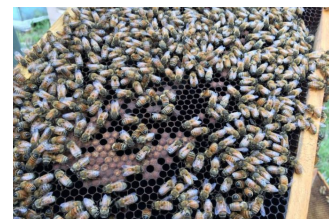
Several studies have reported adverse effects of white sugar and high fructose corn syrup on our health. So should we substitute these types of sugars with another?

Visit the source of this article to find out more. Many thanks to Dimitri Markotsis for this article.

www.abc.net.au/news/2018-03-07/white-brown-raw-honey-which-type-of-sugar-is-best/9522712

EU farmers face total ban on bee-harming pesticides putting pressure on Australia to follow

European farmers are facing a total ban on a common group of pesticides after a report confirms they harm bees, putting pressure on Australia to follow.



The report published by the European Food Safety Authority [EFSA] analysed more than 1,500 studies and found three neonicotinoid pesticides posed a high risk to all bees.

In 2013 the European Union put a temporary ban on the chemicals that were commonly used in agriculture to treat seeds. Research fellow at the University of New England Manu Saunders said the report confirmed what scientists expected. "The risks are high and there is an issue of chronic exposure to neonicotinoids to not just honey bees but also wild bees and other pollinators," she said. Despite the body of evidence Dr Saunders said the issue remained a controversial one. "Any issue like this is always controversial when there are a lot of interests involved, but at the end of the day the scientific evidence shows there is a clear issue here," she said.

Read the full article at:

www.abc.net.au/news/rural/2018-03-06/eu-may-ban-pesticides-harmful-to-bees-australia-could-follow/9516744

Please forward any interesting articles or photos to me at phil@abclass.com.au

Thank you Phil Corbett - Bee Flight Editor and Website Manager



I&WMBA Committee 2016 - 2017

Patron	Norm Hinton	
President	Phil Geeves	0409 485 447
Vice President	George Pallot	07 3202 8332
Secretary	Noela Geeves	07 3281 4165
Treasurer	Kellie Round	0407 114 513
Assistant Secretary	Mike Trott	07 5464 1949
Committee	Phil Dunlop	07 5465 1919
Committee	Grahame Yates	07 3288 8238
Committee	Shane O'Reilly	07 5464 6138
Newsletter & website	Phil Corbett	0419 196 330

Disclaimer

The Content of our newsletter is general in nature. It is made available on the understanding that the I&WMBA is not thereby engaged in rendering professional advice. Links to other websites are inserted for convenience and do not constitute endorsement of material at those sites, or any associated organisation, product or service. In no event will we be liable for any loss or damage including without limitation, indirect or consequential loss or damage, or any loss or damage whatsoever arising from loss of data or profits arising out of, or in connection with this newsletter.